

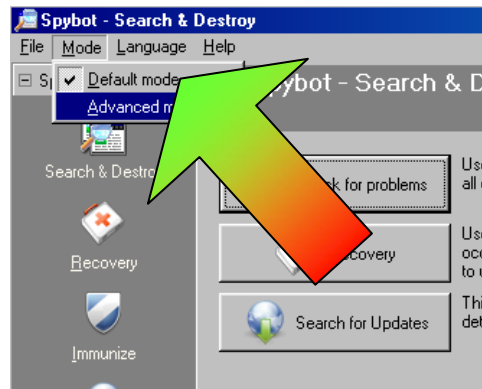
JD Designs & Training Fact Sheet

How to set Spybot Search & Destroy to scan your computer at a scheduled time

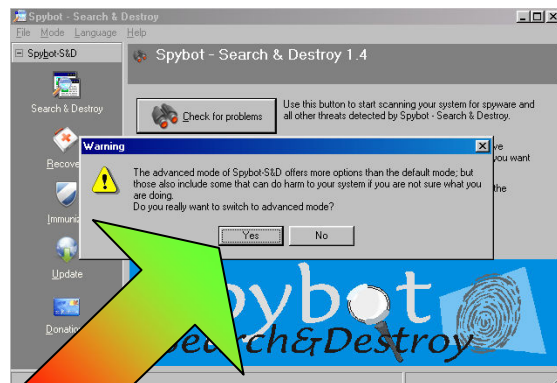
1. Start Spybot Search & Destroy by clicking on the **Start** button, then go to **All Programs**, then to **Spybot Search and Destroy** and click on the link to start the program.



2. Switch to the Advanced Mode by clicking on **Mode** and then on **Advanced Mode**.



3. Click **Yes** to confirm switching to the Advanced Mode.



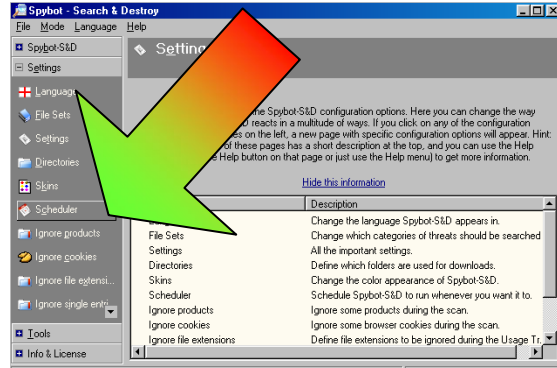
4. Click on **Settings** to view more options.



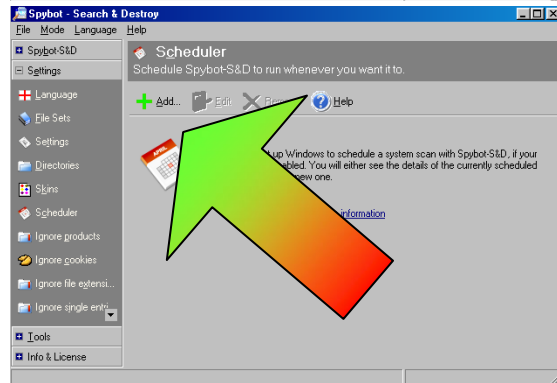
JD Designs & Training Fact Sheet

How to set Spybot Search & Destroy to scan your computer at a scheduled time

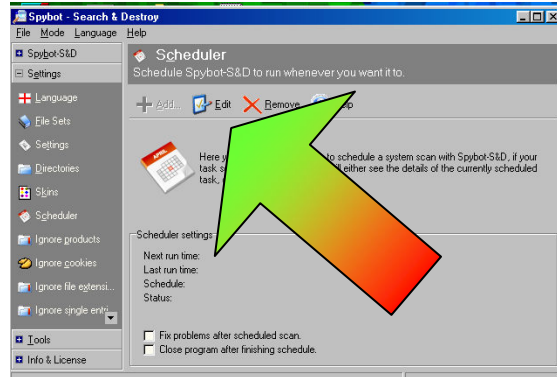
5. Click on **Scheduler** to view the Scheduler options.



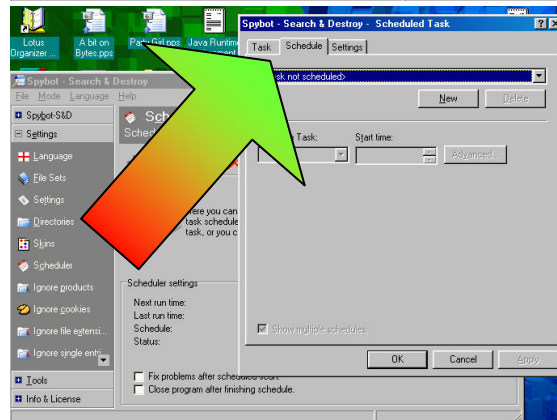
6. Click on the **Add** button to start a new schedule.



7. Click on the **Edit** button to adjust the times for the schedule.



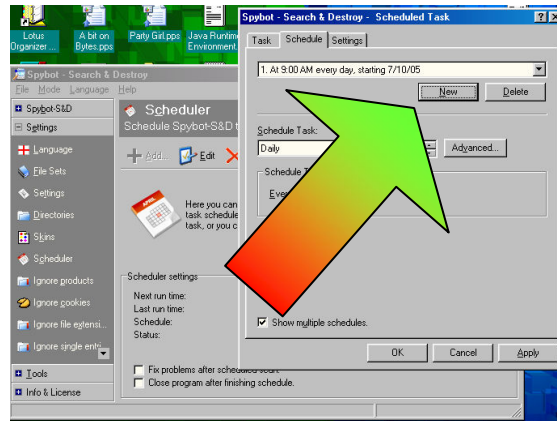
8. On the Scheduled Task window click the **Schedule** Tab.



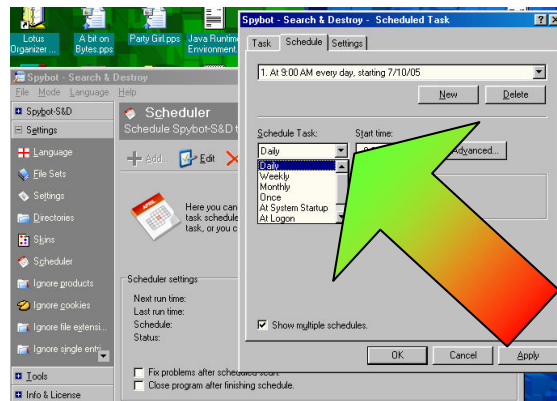
JD Designs & Training Fact Sheet

How to set Spybot Search & Destroy to scan your computer at a scheduled time

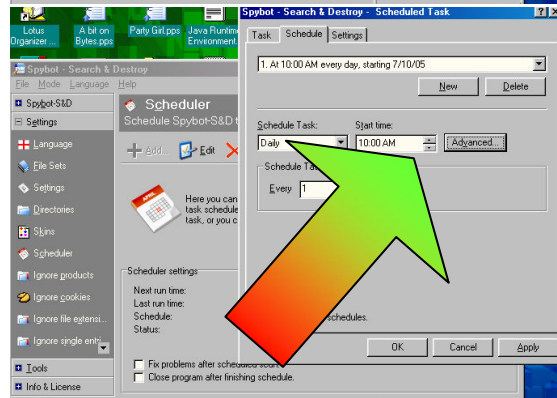
9. Click on the **New** button to show a new schedule to edit.



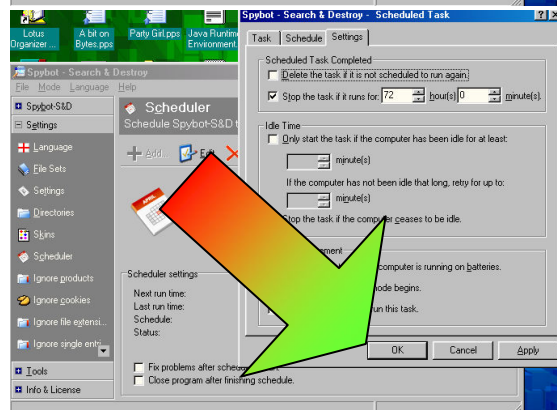
10. Click on the **Down Arrow** to show a menu, from which to select the frequency of the scan, i.e. Daily, Weekly Monthly etc.



11. Click on the **arrows** to adjust the time for the scan to start.



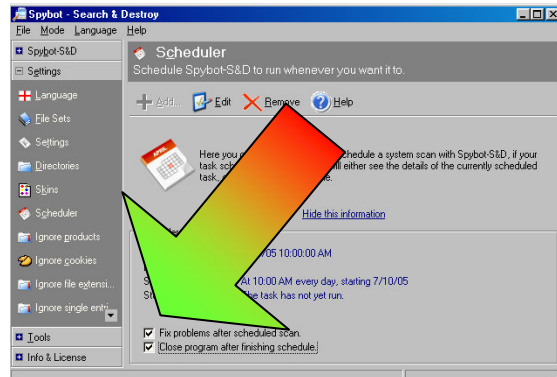
12. Click the **OK** button to finish setting the schedule.



JD Designs & Training Fact Sheet

How to set Spybot Search & Destroy to scan your computer at a scheduled time

13. Check to ensure the **two check boxes** at the bottom have a check mark, so that the program will fix any problems it finds and close when it finishes running.



14. Finally return to the default mode by clicking on **Mode**, then on **Default Mode**. You can now close the program by clicking on the **X** in the top right corner. The program will scan your computer at the time you have set, as long as the computer is running at the selected time.

